

Modular carpet tiles

Product Specifications

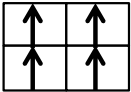
Collection Name	Allegro
Style Number	50029
Product Type	Tile
Surface Texture	Cut Pile
Pile Fibre Content	100% BCF Polyester
Dye System	100% Solution Dyed
Primary Backing	Non-Woven Polyester
Secondary Backing	Fiberglass Reinforced Thermoplastic

	Imperial	Metric
Pile Weight	26	881 g/m2
Gauge	1/4 ga	15.7 / 10 cm
Stitches	12.0 / in.	47,5 / 10 cm
Pile Height	.395 in.	10.0 mm
Pile Thickness	.275 in.	7.0 mm
Density Factor	3403	4.9 ktex
Total Weight	123.7 oz / s.y.	4178 g/m2
Width	19,68" x 19,68"	50 cm x 50 cm

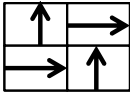
Performance Specifications

Flammability	Meets ASTM E-648 test standards Radiant Panel Class II
Somke Density	Meets ASTM E-662 test standards <450 Flaming mode
Anti-Static Properties	Less than 3.0 kv at 20% R.H.. & 21° C
Dimensional Stability	Less than 0.05 %
Lightfastness	L5 or Better
Resistance to Wet Cleaning	Grey Scale 5

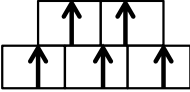
Installation Method's	Quater-Turn, Ashlar, Brick, Monolithic
-----------------------	--



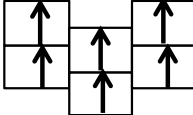
Monolithic



Quater Turn



Brick



Ashlar

Warranty Information

- Limited 20 year Residential Wear & Anti-Static
- Limited Lifetime Against Delamination
- Limited Lifetime on Dimensional Stability
- Limited Lifetime Against Backing Deterioration